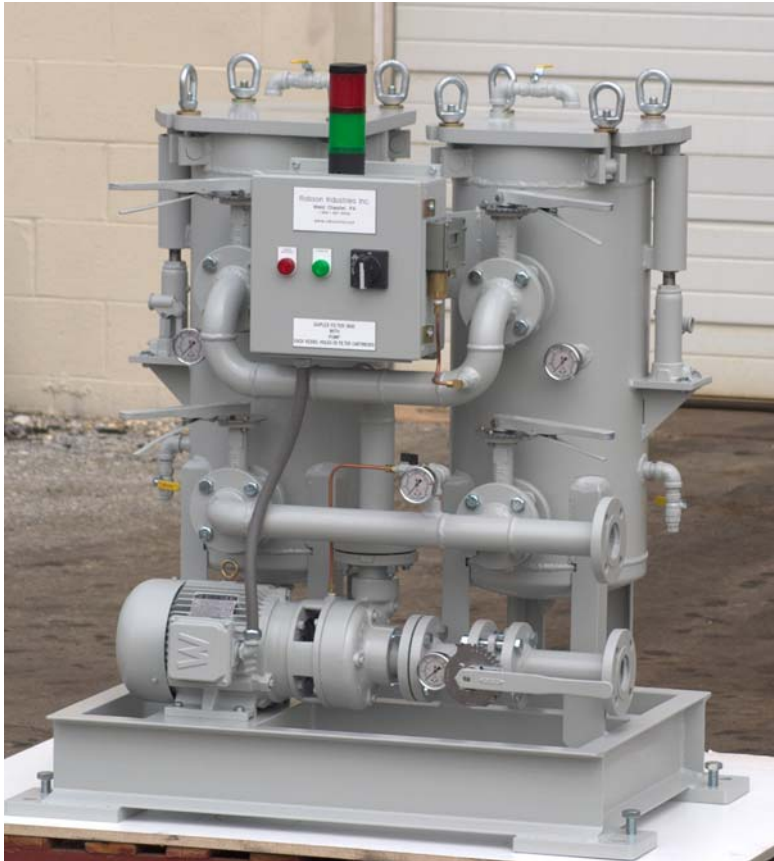


DUPLEX CARTRIDGE FILTER SKID MODEL DUP-3-90



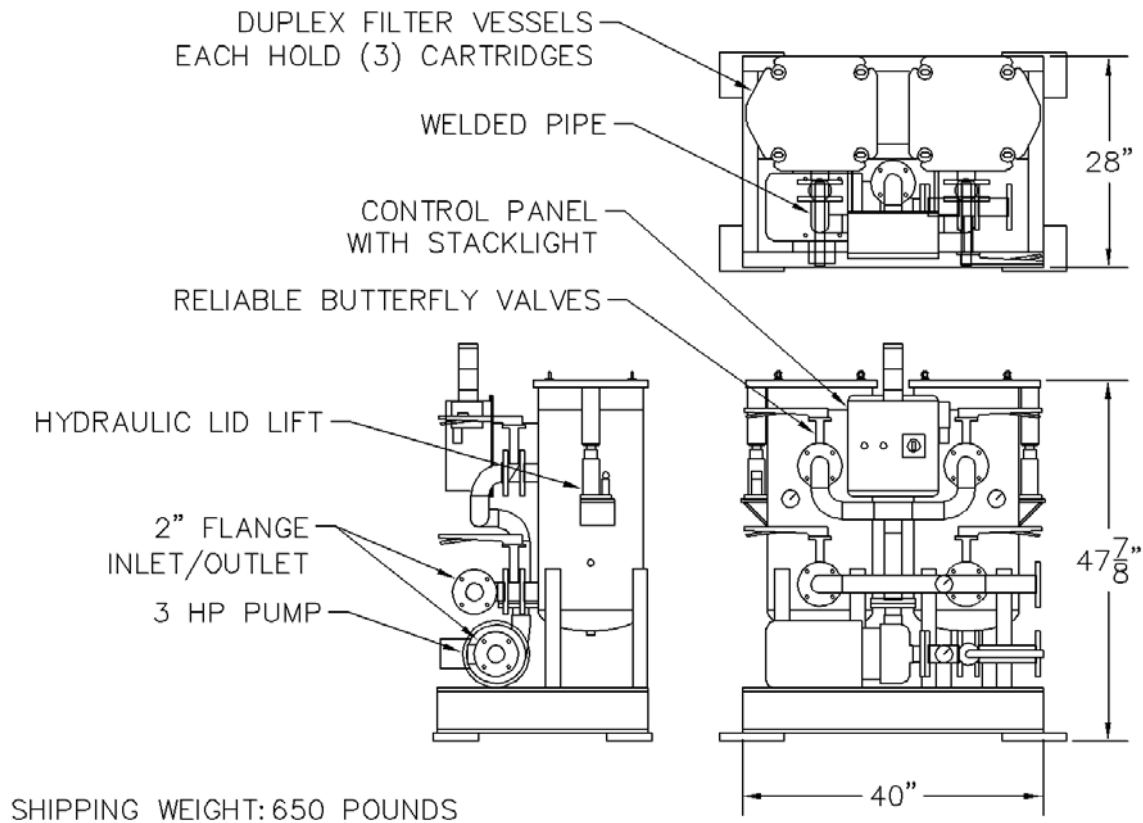
- **Compact Design Minimizes Floor Space Requirement**
- **Duplex Cartridge Filter Vessels Each Hold (3) Standard Cartridges 6" OD x 18" Long**
- **Heavy Duty Structural Steel Frame With Mounting Pads & Leveler Bolts**
- **Smooth Action Jack Posts With Hydraulic Lid Lifts**
- **Reliable Welded Pipe With Butterfly Valves**
- **Stationary Inlet & Outlet Connections Within Skid Layout**
- **Cast Iron Pump With High Efficiency 3 HP TEFC Motor**
- **90 GPM Nominal Flow Rate**
- **Standard Cartridges Stocked By McMaster-Carr Supply Company**
- **Electrical Control Panel With Disconnect Switch**
- **High Visibility Status Stacklight**
- **System Alerts User When Cartridges Are Full**

Typical Applications:

- Water Soluble Coolants
- Quench Oils
- Lubricating Oils
- Hydraulic Oils
- Machine Tool Coolant
- CNC Machining Centers
- Conventional EDM
- Oil Coalescing Filtration



ROBSON INDUSTRIES INC.
DUPLEX CARTRIDGE FILTER SKID
MODEL DUP-3-90



Options:

- Custom Configurations To Match Any Existing Cartridge or Filter Bag
- Multiple Power Options Including International Voltages
- Stainless Steel Construction
- Automated Valves For Unattended Filter Vessel Change
- Automatic Backflush
- Sizes To Handle Flow Rates To 2,000 GPM
- Inlet Strainers

Robson Industries Inc.

Robson Industries Inc.
510 East Barnard Street
West Chester, PA 19382
(888) 567-8308 Fax (610) 692-1968
www.robsonfilter.com sales@robsonind.com